

## **CONSTELLATION CHAPTER EGA BOARD MEETING**

**August 12, 2025**

**Meeting Recorded by Mary Tod**

**Minutes Submitted by Bonnie Berman**

Meeting called to order at 7:01 pm by Ann Fink, Acting President.

**MEMBERS PRESENT:** A quorum was met with the following attendees: Jane Bauersfeld, Susan White, Jeanette Farrell, Mary Vraney, Ann Fink, Michele Hunter, Chris Armstrong, Mary Tod, Donna Finley, Devon Andre, Jan Rollins and Bonnie Berman. Guest attending was Karen Silber. Guest speaker was Stephanie Armstrong.

### **AGENDA (Attachment #1):**

- See Attachment #1

### **Guest Speaker (Stephanie Armstrong):**

- See Attachment #2 for presentation and take away notes from meeting.

### **APPROVAL OF MINUTES OF THE PREVIOUS MEETING:**

- A motion to approve the minutes of June 17, 2025, was made by Chris and seconded by Mary V. There were no objections. Motion carries.

### **PROGRAMS (Attachment #3):**

Submitted by Ann Fink, 1st VP/Programs & Education

- See Attachment #3
- Ann pointed out that new to the schedule is Feb 2, 2026-Canby's fabric covered box.
- Ann reported that the Program Committee is looking into a Group Correspondence Class for May to be covered by the \$200 they estimate will be left in their budget. They are investigating a course called Thank Goodness it is Finished.

### **MEMBERSHIP:**

Submitted by Cynthia Rosenberg, 2nd VP/Membership

- Cynthia reported that she has received more blank membership cards.

### **NEWSLETTER:**

Submitted by Chris Armstrong, 3rd VP/Newsletter

- Upcoming deadlines are **Sept 10th and Nov 10th.**

### **REGIONAL REPORT:**

Submitted by Jane Bauersfeld, Regional Representative

- Jane questioned the \$5 fee for virtual lectures. Michelle reported that MAR does not charge a fee for virtual lectures but EGA Nation does. Jane is going to confirm.
- Camp Wannastitch coupons are available. Guest coupons available Sept 1, 2025. Both coupons due Dec 1, 2025. Americas Tapestry for Delaware will be at Camp Wannastitch for anyone to stitch on.
- A MAR Seminar will be on June 16-20 in Fairfax, VA.

### **OUTREACH/DIVERSITY:**

Submitted by Jeanette Farrell

- Planning to register for Howard County Pride on Oct 12, 2025.

- Already registered for Annapolis Pride on Oct 18, 2025.
- Planning a stitch-in at the main branch of Howard County Library in November.
- There are plans to do two more children Hospice quilts. Patterns and information will be given out in October. The themes will be Gnomes and Jungle Babies.

#### **TREASURER (Attachment #4):**

Submitted by Devon Andres & Sue White, Treasurers

- See Attachment #4
- Income and Expenses are off but are predicted to balance out at the end of the year.
- CDs come due in Sept. Sue will try to get the best rates and if possible spread out due dates.
- It was determined to move the Zoom license which is currently in the Rent budget to the Administrative budget.

#### **OLD BUSINESS:**

- Ann let membership know that we will be voting on the Chapter Logo and on funds for the Website upgrade at the Annual Meeting.
- Ann stated that the cost for the new website licensure has been included in the new budget.
- Ann is hoping that there will be members who will be willing to update the website. If not a fee will have to be added in the budget at approximately \$50/month.
- There was a previous discussion if the Chapter should pay the PayPal fees for classes. Our operating procedure is that the expenses for all classes are covered by participants therefore the Chapter should not take on the cost of the Pay Pal fee for anything other than Membership Dues. There has been no complaints from class participants about the PayPal fee.

#### **NEW BUSINESS:**

- 2026 Budget (Attachment #5)
  - Sue, Devon and Ann sat down and used this year's budget to project next year's budget.
  - Decreased number of members to 130 from 140 to be on safe side for income funds.
  - Newsletter and website funds were increased. Approximately \$200 of the budget line is used to cover the expense of the few newsletters we still print and send out by mail.
  - Officers' travel has been cut to \$100.
  - Outreach and Diversity has increased to \$600.
  - Charity contributions have been increased to \$200. Ann received no feedback from membership on suggestions of what Charities to donate too. Ann suggested we find a charity that deals with stitching. Some suggestions were a charity that refurbishes sewing machines and give to underserved communities, Boy and Girls Club, 4-H clubs, and a quilt group that makes pillow cases for foster children (Mary V will investigate).
  - Clarification was made between restricted and unrestricted funds. Restricted funds are funds that are specified for a particular use. An example would be when the ANG chapter dissolved and the funds were given to EGA they specified it should be used for needlepoint education, workshop or class. Funds that have not been given a specified use go to unrestricted funds.
  - A motion to approve the 2026 Budget, was made by Mary T and seconded by Chris. There were no objections. Motion carries.
- The Tech Committee had discussed that possibility of selling the microphone that was purchased with EGA funds but decided it would be good to keep in case the system at our meeting room does not work. The other item discussed was to have our Chapter buy a

laptop (\$500-\$800) so that members do not have to carry and use their personal laptops. The big issue is where to store it safely.

- Ann and Mary T will be speaking with Debbie Barlow about becoming the Chair of the Tech Committee.
- Alice and Penny are working on nominations for the 2026 Officer Slate. The Slate of Officers needs to be in the October Newsletter so that it can be voted on at the Annual Meeting,
- The Annual Meeting will be on Monday November 3, 2025.

A motion to adjourn the meeting was made by Bonnie and seconded by Mary V. There were no objections. Meeting adjourned at 8:50 pm.

EGA Board of Directors' Meeting  
August 12, 2025  
Agenda

Call to Order: 7:00

Presentation of new website progress – Stephanie Armstrong

Approval of Minutes of Prior Meeting: June 17, 2025

Committee Reports:

Programs

Membership

Newsletter

Region

Outreach

Treasurer's Report

Old Business:

Website Upgrade – If further discussion needed

Logo Revision

New Business:

Budget for 2026

Possible sale of microphone we no longer need – Mary Tod

Board members for 2026

Announcements

Adjournment

Constellation Chapter 12<sup>th</sup> of August Meeting:

Notes from Stephanie Armstrong's presentation

# Constellation Chapter Website Mapping:

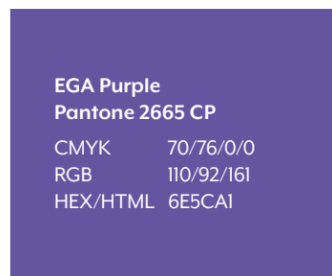
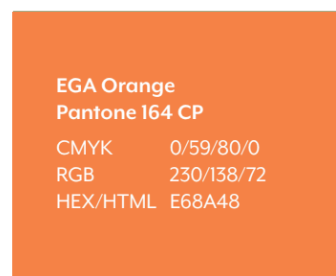
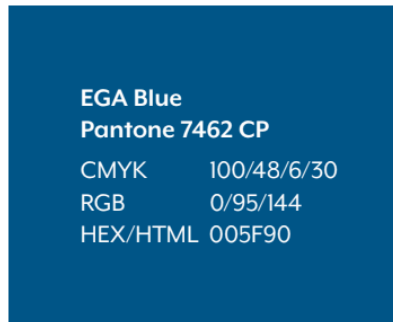
***\*\* This is a general mock up of color schemes, fonts and layout. Some stylistic choices will change once in Wix and we're using their tools and templates***

## Currently on Website:

- *Google website*
- *Current Pages:*
  - Home
  - About:
    - History
    - Officers
    - EGA National
    - Mid Atlantic Region
  - Programs
    - Calendar of Events
    - Meetings
  - Membership
  - Gallery
    - Maryland Sheep & Wool Festival
    - Glen Burnie Library Outreach
    - Class Projects
    - Ort Box Class
  - Contact Us

## Requirements:

- EGA Requirements:
  - EGA & Chapter logo
  - Required color palette by EGA (below)



- Typography:
  - Times New Roman
  - Futura
  - Mr. Eaves: (below)

**The quick brown fox jumps over the lazy dog**

**The quick brown fox jumps over the lazy dog**

- Constellation Chapter Board Requirements:
  - Logo on homepage
  - New pages:
    - Membership
    - Newsletter
      - Password Protected
    - Classes & Sign Ups
    - Limiting sign ups
  - Paypal for classes
  - Interest Groups

## Main Goal & Personal Notes:

- Main Goals:
  - Find main layout for menu and pages
  - The official font we want to use out of the 4 provided by EGA
- Personal Notes:
  - Anything linked in original website will be linked in this one
  - We can add small stylistic graphic pieces that can break up a page:
  - Wix Plans: (without domain price) (can be paid monthly, yearly or every two years)
    - Basic - \$75
    - Middle - \$100 \*\*\*
    - Premium - \$150

# Questions:

- Can we group sections in a more concise way?
- Should galleries have expirations?
- Should interest groups go on the calendar & classes page? Or a separate page?

# Notes from Meeting:

- Some voted for tool bar on the right hand side, some voted for top bar
- Want the logo bigger on home page
- Change current logo from square to fitted
- Name of chapter bolded (would be discussed in November)
- Change Green in tool bar to Soft Blue
- Want pictures included with classes
  - Classes should be linked to a details page with a sign up button below
- Multiple links to classes in classes page, calendar & newsletter
- Classes are only available to members; other chapters will need to contact board to receive password
- When formatting in Wix, have one page in Futura and the other in Mr. Eaves to compare (maybe a combo of both)
- Newsletter linked instead of it's own page
- Preferences:
  - Main menu on right hand side
  - Drop down menu
  - Blocking for text to keep bold background
- Limit copying images from website (look into)
  - Disclaimers about images and information are required to be on the website by EGA
- Next Steps: Set Up Wix



# **Constellation Chapter Website Mapping:**

Presented by Stephanie A. Armstrong



# Home Page

Main Menu Options

Home

About

Programs

Membership

Gallery

Contact Us



Home

About

Programs

Membership

Gallery

Contact Us



[Home](#)

[About](#)

[Programs](#)

[Membership](#)

[Gallery](#)

[Contact Us](#)



# **Submenu Options:**

Submenu Layout

# < About



History

Officers

EGA  
National

Mid Atlantic  
Region

Home

About

Programs

Membership

Gallery

Contact Us



Home

About

History

Officers

EGA National

Mid Atlantic Region

Gallery

Contact Us





Home

About

Programs

Membership

Gallery

Contact Us

History

Officers

EGA National

Mid Atlantic Region



# **General Page Options**

Gradients & Blocking for Text

# < History



The Constellation Chapter was formed in 1973 in Baltimore, MD.

Our name and logo are derived from the USS Constellation warship located in Baltimore's Inner Harbor.

[Home](#)[About](#)[Programs](#)[Membership](#)[Gallery](#)[Contact Us](#)

# < Officers



*President:*

*Vice President:*

*2nd Vice President:*

*3rd Vice President:*

*Co-Treasurer:*

*Co-Treasurer:*

*Recording Secretary:*

*Corresponding Secretary:*

*Regional Representative:*

*Outreach:*

*Directors:*

*Website Administrator:*

Home

About

Programs

Membership

Gallery

Contact Us

# < Officers



*President:*

*Vice President:*

*2nd Vice President:*

*3rd Vice President:*

*Co-Treasurer:*

*Co-Treasurer:*

*Recording Secretary:*

*Corresponding Secretary:*

*Regional Representative:*

*Outreach:*

*Directors:*

*Website Administrator:*

Home

About

Programs

Membership

Gallery

Contact Us

# **Gallery Page Options**

Galleries all on one page (number of formats on Wix)



[Home](#)

[About](#)

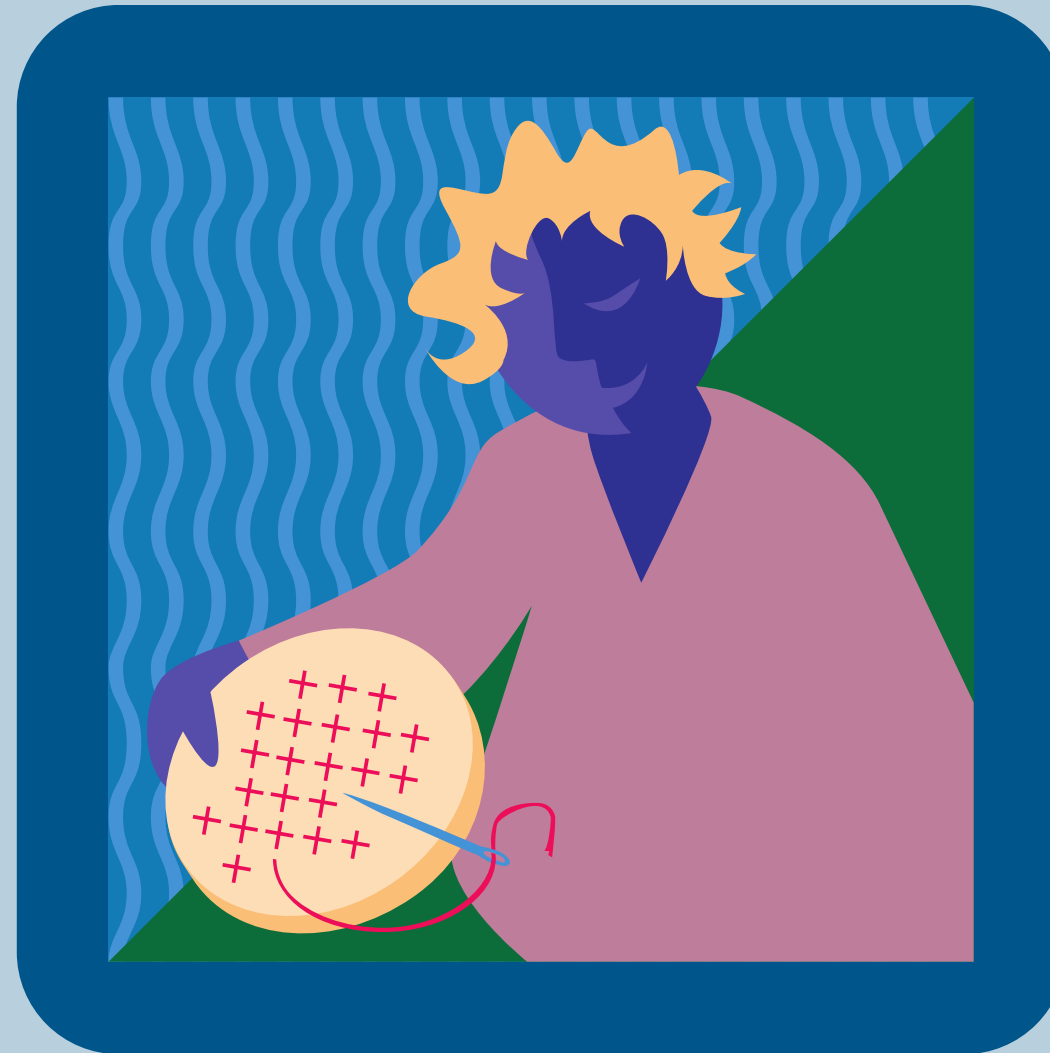
[Programs](#)

[Membership](#)

[Gallery](#)

[Contact Us](#)

# Maryland Sheep & Wool Festival







[Home](#)

[About](#)

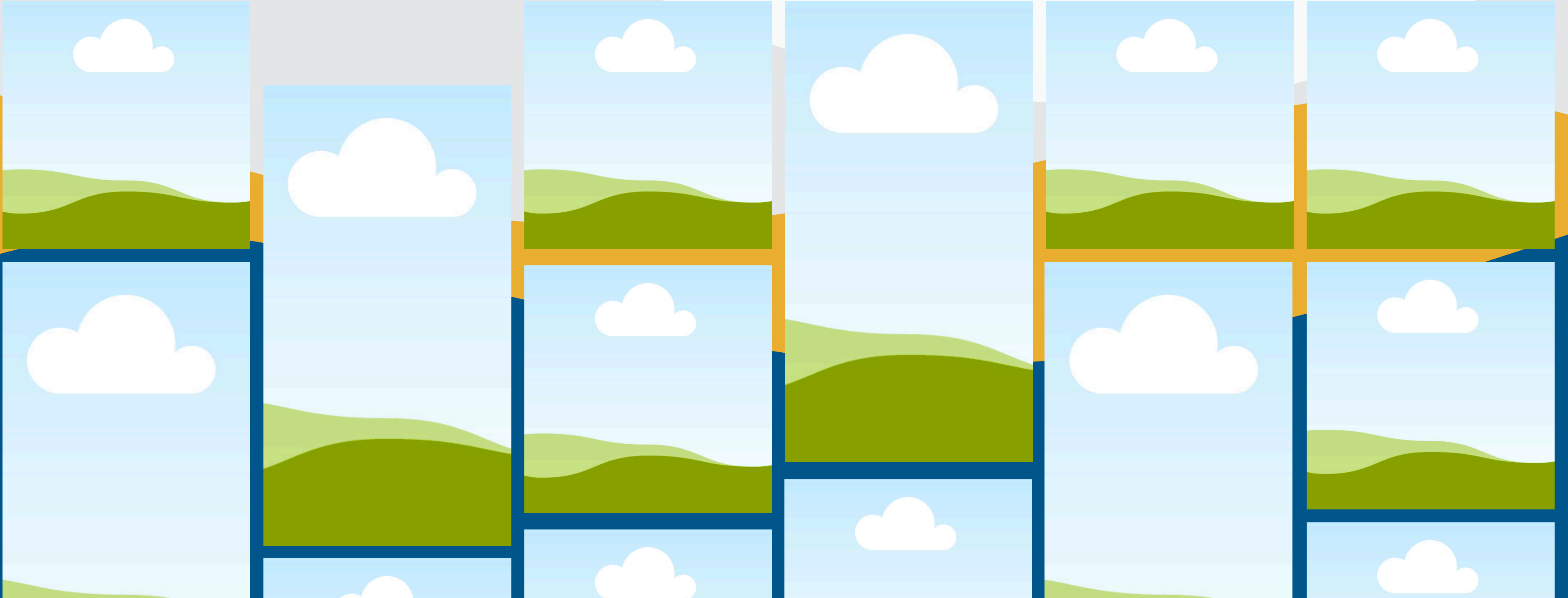
[Programs](#)

[Membership](#)

[Gallery](#)

[Contact Us](#)

# Maryland Sheep & Wool Festival





# **Classes Page Options**

Classes sectioning with Sign Up Buttons



Home

About

Programs

Membership

Gallery

Contact Us

August Classes

Class 1: [date] to [date]

Sign Up

Class 2: [date] to [date]

Sign Up

Class 3: [date] to [date]

Sign Up

# < Classes



## *August Classes*

Class 1: [date] to [date]

*Sign Up*

Class 2: [date] to [date]

*Sign Up*

Class 3: [date] to [date]

*Sign Up*

Home

About

Programs

**Membership**

Gallery

Contact Us

# Contact Page Options

Contact bubble

(class sign up & membership page will look similar to this)



[Home](#)

[About](#)

[Programs](#)

[Membership](#)

[Gallery](#)

[Contact Us](#)

First Name:

Last Name:

Your Email:

Your Message...

*Send*

# Master List EGA Program Schedule

Date


Instructor


Course

Type

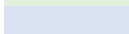
Format

## LEGEND:

 Class (Outside Instructor)

 Class (Chapter Member)

 Lecture

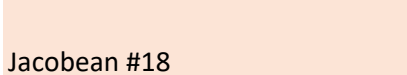
 Stitch-In

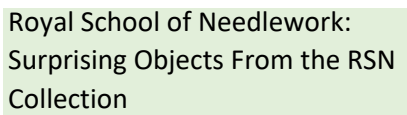
 Chapter Event


2025

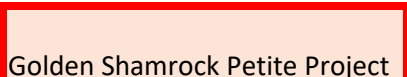
6-Jan Mon  Stitch-in Zoom

11-Jan Sat  Stitch-in Zoom

1, 9 Feb & 1, 9 Mar Sat/ Sun Hazel Blomkamp  Jacobean #18 Class Zoom

3-Feb Mon Dr. Isabella Rosner  Royal School of Needlework: Surprising Objects From the RSN Collection Lecture 50+ Sr Ctr In-Person/ Zoom

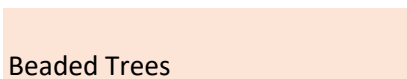
8-Feb Sat Barbara Meger  Ticking Purse Class 50+ Sr Ctr In-Person


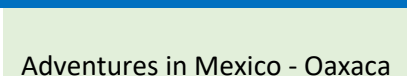
3-Mar Mon Ann Fink  Golden Shamrock Petite Project Class 50+ Sr Ctr In-Person

8-Mar Sat  Woodlawn Field Trip/ Lunch Travel

29-Mar Sat Amy Helsel  MAR Felt Cardinal Class 50+ Sr Ctr In-Person

7-Apr Mon Mary Tod  Purple Mountains Majesty Class 50+ Sr Ctr In-Person

12-Apr Sat Donna Dickt  Beaded Trees Class 50+ Sr Ctr In-Person

5-May Mon Susan Elliot  Mother's Day Tea 50+ Sr Ctr In-Person/ Zoom  
 Adventures in Mexico - Oaxaca Lecture

10-May	Sat	Devon Andres	Cross Stitch Software Explained	Lecture	50+ Sr Ctr In-Person/ Zoom
2-Jun	Mon		Potluck Luncheon		50+ Sr Ctr In-Person/ Zoom
			Membership Showcase		
14-Jun	Sat		Stitch-in		
7-Jul	Mon		Stitch-in		
12-Jul	Sat		Stitch-in		
17-Jul	Thurs	Ann Strite-Kurz	Creative Adaptation to Canvas	Lecture	50+ Sr Ctr In-Person/ Zoom
4-Aug	Mon		Stitch-in		
9-Aug	Sat		Stitch-in		
8-Sep	Mon		Queen Mary's Dollhouse -- 100th Anniversary RSN Lecture	Lecture	50+ Sr Ctr In-Person/ Zoom
20-Sep	Sat	Amy Helsel	Cross Stitch & Beyond -- 2025 THaP (Band Sampler Needle case)	Class	50+ Sr Ctr In-Person
22, 29 Oct & 5, 12 Nov	Sat/ Sun	Dawn Donnelly	Treasures from the Great Lakes	Class	Zoom
6-Oct	Mon	Melissa Shippee	Inner Light Mandala	Class	50+ Sr Ctr In-Person/ Zoom
18-Oct	Sat	Terri Tubergen	Nametag: Cross Stitch on Paper	Class	50+ Sr Ctr In-Person
		Louise Grady	Nametag: Beaded	Class	
			Annual Meeting		50+ Sr Ctr

3-Nov	Mon		Film: Muncaster Castle		In-Person/ Zoom
		Terri Tubergen	Nametag: Cross Stitch on Paper	Class	50+ Sr Ctr In-Person
15-Nov	Sat	Debbie Logsdon	Nametag: Cutwork Petite Project	Class	
			Holiday Party		50+ Sr Ctr In-Person/ Zoom
1-Dec	Mon	Margaret Kinsey	History of Rozashi	Lecture	
20-Dec	Sat	Sophie O'Neal	Embroidery Journals	Lecture/ Chat	50+ Sr Ctr In-Person/ Zoom

## 2026

5-Jan	Mon	Donna Finley	Schwalm	Class	50+ Sr Ctr In-Person
17-Jan	Sat		Stitch-In (Camp Wanna-Stitch Weekend)		
2-Feb	Mon	Canby Robertson	Fabric Covered Box	Class	50+ Sr Ctr In-Person
21-Feb	Sat				
2-3 Mar	Mon/ Tues	Ann Strite-Kurz	Pair of Puffins Perched on a Prominence	Class	50+ Sr Ctr In-Person
21-Mar	Sat				
6-Apr	Mon	Barbara Bass	Rozashi Kit Choices	Class	50+ Sr Ctr In-Person/ Zoom
18-Apr	Sat				
			Mother's Day Tea		50+ Sr Ctr



4-May	Mon	Ann Strite-Kurz	Creative Uses for Blackwork	Lecture	In-Person
16-May	Sat	Ann Fink	Punch Needle Project	Class	50+ Sr Ctr In-Person
1-Jun	Mon		Potluck Luncheon		50+ Sr Ctr In-Person/ Zoom
			Membership Showcase		
20-Jun	Sat		Stitch-in		
6-Jul	Mon		Stitch-in		
18-Jul	Sat		Stitch-in		
3-Aug	Mon		Stitch-in		
15-Aug	Sat		Stitch-in		
14-Sep	Mon				
19-Sep	Sat				
5-Oct	Mon	Barbara Bass	Ribbon Embroidery Petite Project	Class	50+ Sr Ctr In-Person
17-Oct	Sat	Debbie Logsdon	Debbie Rowley Jewel Box (Part 1)	Class	50+ Sr Ctr In-Person
18, 24 Oct & 1 Nov		Wendy Moore	Pyramids at the Oasis	Class	Zoom
			Annual Meeting		
2-Nov	Mon				
21-Nov	Sat	Debbie Logsdon	Debbie Rowley Jewel Box (Part 2)	Class	50+ Sr Ctr In-Person
			Holiday Party		
7-Dec	Mon	Debbie Logsdon	Scandinavian Needlework Focus for 2027	Lecture	
19-Dec	Sat				

Options:

Embroidery Journal Kits (Jessica Checking)

Punch Needle Project (Ann checking for kits)

Cynthia Page Gossage

Kantha Class



\$0 Debbie

Needlepoint Interest  
Group Open to Chapter  
\$0

\$126 Jessica

Cross Stitch ?? Terri

Needlepoint \$0 Barbara

Beading \$0 Ann

Cross Stitch \$0 Terri

Peyote Beading \$0 Terri

	\$26	Ann
Cross Stitch	\$0	Terri
Cutwork	\$0	Debbie
	\$250	Ann
	\$100	Jessica

<b>Total Cost 2025:</b>	\$628
-------------------------	-------

<b>Funds Still Availa</b>	\$572
---------------------------	-------

White Work	\$0	Terri
	\$0	Ann
	\$0	
Blackwork on Canvas	\$0	Ann
Rozashi	\$0	Ann
		Terri/ Louise

Punch Needle  
Embroidery

\$0 Ann

\$0 Ann/Terri

Ribbon  
Embroidery

\$0 Barbara

Needlepoint

\$0 Debbie

Needlepoint

\$0 Barbara

Needlepoint

\$0 Debbie

\$0 Debbie



<b>Total Cost 2025:</b>	<b>\$0</b>
<b>Funds Still Available</b>	<b>\$1,200</b>

# Treasurer's Report for August Board Meeting8,130.81

August 12, 2025

The checking account had a balance of \$16,357.25. Our income to date is \$8,130.81. Our expenses to date are \$3,334.98. I have attached our year-to-date (YTD) Budget vs. Actual tracking to show our income and expenses for the current year.

We currently have a PayPal balance of \$0.

Our 2 CDs have the following amounts: CD ending in -0137 has a balance of \$3,393.38. CD ending in -2241 has a balance of \$8,076.89. Interest year to date from the two CDs is \$234.57.

Our total current worth (combined checking account, PayPal, and CDs) is \$27,827.52.

Susan White

Devon Andres

Treasurers

	2025		2025				
	Budget		Budget	2025 Actual			



	Proposed		Proposed				
INCOME		EXPENSES		INCOME		EXPENSES	
Dues	\$2,500.00	Region Dues		Dues	\$2,178.00	Region Dues	\$0.00
Interest	\$350.00	Educational Events	11,200.00	Interest	234.57	Educational Events	\$2,806.51
Educational Events	\$10,000.00	Seminar* (MAR)		Educational Events	\$5,645.73	Seminar (MAR)	\$0.00
Seminar (MAR)		Exhibits		Seminar (MAR)		Exhibits	\$0.00
Exhibit		Fund Raising		Exhibit		Fund Raising	\$0.00
Fundraising	\$1,000.00	Cost of Sales		Fund Raising		Cost of Sales	
Sales		Rent	0.00	Sales		Rent	\$132.99
Advertising	\$130.00	Newsletter & website	300.00	Advertising	\$51.40	Newsletter & website	\$31.79
Community Outreach	\$800.00	Admin	500.00	Community Outreach	\$210.00	Admin	\$210.39

Contributions		Officers		Contributions		Officers	
, Restricted	\$200.00	Travel	500.00	, Unrestricted	\$45.68	Travel	\$0.00
Contributions		Community	1,500.	Contributions		Community	\$100.0
, Unrestricted	\$300.00	Outreach	00	, Restricted	\$0.00	Outreach	0
Parties/Meals		Parties/Meals		Parties/Meals	\$0.00	Parties/Meals	\$12.70
Retreats		Retreats		Retreats	\$0.00	Retreats	\$0.00
Contributions		Contributions		Contributions		Contributions	\$100.0
/Gifts		/Gifts	100.00	/Gifts		/Gifts	0
Other		Membership		Other		Membership	
Expenses		Expenses	100.00	Expenses		Expenses	
Transfer from							
savings	0	IDEA				IDEA	
		Other				Other	
TOTAL	\$15,280	TOTAL	14,200	TOTAL	8365.3	TOTAL	3394.3
REVENUE	.00	EXPENSES	.00	REVENUE	8	EXPENSES	8

Income	2025 Budget	2025 Projected Actual	2026 Proposed
Dues	\$2,500		\$2,600
Interest Income	\$350	\$235	\$250
Education/Programs	\$10,000	\$10,000	\$10,000
Fundraising	\$1,000	0	0
Advertising	\$130.00	\$52	\$50
Outreach	\$800	\$210	\$0
Contributions Restricted	\$200	\$0	\$0
Contributions Unrestricted	\$300	\$46	\$50
Transfer from Savings	\$420	\$0	\$0
Expenses			
Education/Programs	\$11,200	\$10,850	\$11,000
Newsletter and Website	\$300	\$32	\$600
Administration	\$500	\$260	\$450
Officers Travel	\$500	\$0	\$100
Outreach/Diversity	\$1,500	\$450	\$600
Contributions/Gifts	\$100	\$100	\$200
Membership Expense	\$100	\$0	\$0

\* current membership 140; projected membership 130

Total Income \$12,950.00

Includes \$210 for newsletter; balance for new website

Total Expenses \$12,950.00